



CeramaZirc 3YZ

High Performance Sintered Zirconia

Dubbed 'ceramic steel' Zirconia (ZrO_2) ceramic materials offers a combination of high hardness, wear and corrosion resistance while still maintaining one of the highest figures for fracture toughness amongst ceramic materials

Precision Ceramics offers a range of Zirconia materials spanning from conventional sintered Zirconia to high performance Nano Zirconia consolidated by Hot Isostatic Pressing.

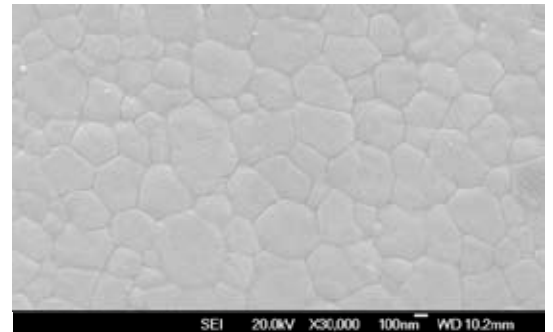
Key properties of Zirconia ceramic

- Use temperatures up to 1000°C
- Low thermal conductivity
- Chemical inertness
- Resistance to molten metals
- Wear resistance
- High fracture toughness
- High hardness

Typical Uses of ZrO_2

- High pressure equipment ball valve balls and seats
- High density ball grinding media
- Rollers and guides for metal forming
- Thread and wire guides
- Metal extrusion dies
- Deep well down-hole valves and seats
- Powder compacting dies
- Pump seals and shaft bearings
- Oxygen sensors
- High temperature induction furnace susceptors
- Fuel cell membranes

- High purity 3 mol.% Ytria Partially Stabilised Zirconia (3YSZ)
- Finer grain structure ensures higher mechanical properties
- Increased grain size uniformity ensures better isotropy of properties



CeramaZirc 3YZ

Density [g/cm_3] = 6.05
 Flexural Strength [MPa] = 1200
 Compressive Strength [MPa] = 2100
 Young's Modulus [GPa] = 200
 Poisson Ratio = 0.30
 Hardness $HV_{0.05}$ [GPa] = 13.5
 Fracture toughness K_{Ic} [MPa/m^2] = 8
 Max use temperature [°C] = 1000
 Thermal expansion coefficient [$\times 10^{-6}/^{\circ}C$] = 10
 Thermal conductivity [w/mK] = 2
 Thermal shock resistance [ΔT °C] = 250

* K_{Ic} toughness as measured by the Indentation method

N.B. Values presented are mean values for the samples tested and are given as an indication only for the purpose of comparing between different materials. The properties of the actual material might vary slightly and could be affected by the shape and size of the part.

www.precision-ceramics.eu
 High Performance Customised Ceramics



PRECISION CERAMICS EUROPE

Unit 314 Eurobase Park, IDA Industrial Estate, Cork Road, Waterford, X91 EH5N, Ireland

Tel: +353 51 550 480

Email: info@precision-ceramics.eu

www.precision-ceramics.eu